

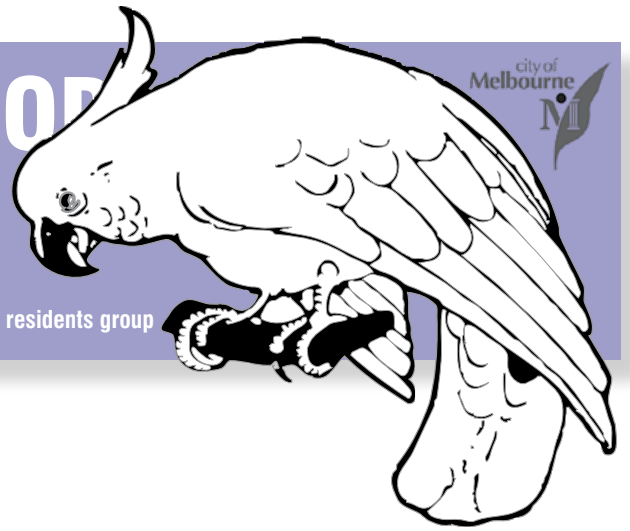
OUR NEIGHBOURHOOD

Newsletter for all city residents

No. 34 — JULY 2007

• EastEnders • Residents 3000 • Hardware Street •

If you want to help keep your neighbourhood pleasant, friendly and liveable, join a residents group



Not smiling John!!!

Our City has a wonderful ring of green – Fitzroy Gardens, Carlton Gardens, Fawcner Park, Kings Domain, Flagstaff Gardens and more – cherished and cared for by our City Council for 150 years. We have a garden heritage other cities would die for!

But what of the future? For the first time we have no “Manager of Parks and Gardens” at Council. Following the Ernst and Young ‘efficiency review’ Council has abolished this position. Only a “contracts manager” remains. The parks are of course maintained under contract. But Council must retain an in-house manager, responsible for horticultural monitoring and long-term planning.

For example, we have historic elms – we need to control elm leaf beetle, and the deadly Dutch Elm Disease could devastate our boulevards. Planning for the replacement of avenues of elms, as is happening now in Fitzroy Gardens is critical. Our elms come from a special plant stock – you can’t simply ring a nursery and purchase 4-year-old elms for the annual planting program. They are grown under contract with the numbers needed planned years in advance.

The parks management team has other vital roles, such as the assessment of the impact of events. Can they be staged without causing damage to tree roots and floral plantings? Environmental and horticultural planning and management are essential year in and year out. In times of drought, contingency planning to preserve the trees and significant other plantings is critical. Management of wildlife in parks is also a major task. Possums and bats, while protected, can be a major source of damage. Planning all these activities is the job of a specialist manager – it cannot be left to “contractors”.

We have an international reputation for our parks and gardens.

Managers from around the world come to visit – from Golden Gate Park in San Francisco, from Singapore, from the UK. Together with Parks



Victoria, Melbourne is a founding member and principal sponsor of the Parks Forum. A college of international park agencies originally established here, it has membership that includes all major Australian park agencies, most New Zealand agencies and extends to the Royal Parks in London. Sir Edmund Hillary is its patron. Our City must continue its membership and support for this important organisation but if membership is retained, who will represent us at international meetings? Melbourne’s credibility as a leading parks agency is now seriously at risk.

Our Council works hard in promoting Melbourne. Ironically all our marketing efforts highlight our parks and gardens in the ‘MUST-SEE’ category when visiting our city. And people do visit – and it works – an astounding 14 million visits are recorded in the parks annually. How can our parks cope with this level of visitation without careful planning and

management? Park Rangers are in the gardens every day to educate visitors as much as to watch for damage.

The key to successful park management is **integration** – of horticultural expertise, visitor management, good maintenance and strategic planning – not the **fragmentation** inherent in Melbourne’s new model.

Council must have a clear policy on our parks and gardens and ensure it is implemented. It is not for the “administration” to undermine Council policy.

We call on the Council to think again about the management of Melbourne’s parks and gardens.

This article was contributed by Vicki Davidson who was Group Manager of Parks & Recreation, City of Melbourne, from 1995 to 2000. She is now a consultant and regular advisor to the parks industry nationally.

Three city residents groups have come together to produce this newsletter – we encourage you to be active in your community and contribute to OUR NEIGHBOURHOOD

Bigger is NOT better

As you know, after an extensive and expensive struggle all the way to VCAT, individual residents, our various CBD residents groups and bodies corporate won the battle to stop a huge “tavern” development in Exhibition Street.

But new proposals for similar large venues are emerging – at 55 Swanston Street (500 patrons) and at 315 Little Lonsdale Street (700 patrons). Developers at both locations have made applications for planning permits and are applying for very extensive liquor licenses – up to 5am and 7am! (Breaking news – 55 Swanston Street is on hold, but the applicant promises to be back)

Our Council wants a 24/7 City. Yes! But we know that large groups and alcohol don't mix well (look at the football, cricket and even tennis). Do we really want a City distinguished by 24-hour excessive drinking; and the resultant street behaviour?

If we take that path, the result will be that many people will stay away – tourists, people who come for entertainment and events, businesses, retailers and shoppers. Who wants to confront broken bottles, vomit in shop/office doorways? Or have to call the Police to stop street scuffles?

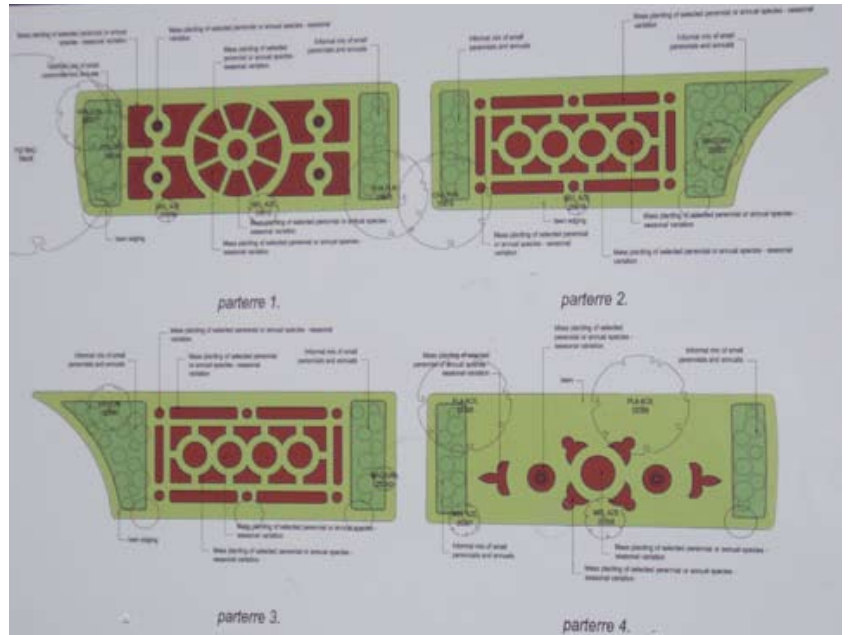
The policing of our City will suffer if the Police have to spend the early hours of each morning dealing with dangerous street behaviour.

Indeed both The Age and the Herald Sun have recently shown pictures of street violence with very powerful reports – using headings such as “The booze battlegrounds” and “Binge City”. Is this the sort of image our Council and our State Government want? Does this attract tourists, visitors and businesses to Melbourne?

Again, we say the State Government should bring together all those affected to discuss possible solutions – business, traders, the Council, the Police, the AHA, the entertainment/tourist industry, the educational institutions, residents, and more. We need to involve all interests in structured discussion.

We have written to the Premier three times along these lines – but are yet to receive a response.

We urge Melbourne's members of State Parliament to get to work with the Premier and the relevant Ministers (at least three in number) to ensure that we become an enjoyable and safe 24-hour City.



Community Safety

“Alcohol after dark: the critical issues” was the topic at a recent workshop conducted by Victorian Safe Communities Network Inc. It related to the impact of excessive alcohol in terms of street, vehicle, domestic and other violence.

The VSCN is an organisation which brings together those concerned with “community based injury prevention and community safety promotion”. Their interests are wide – safety in farm, workplace, sport, crime, domestic and public places and events – and more.

Research was presented at the workshop linking an increase in violence problems to the liberalisation of licensing, and the “density” of licensed premises. They found this was true in rural/provincial areas as well as well as large cities.

The VCSN says:
“Local communities are frequently beset with resolving competing demands. The tension between these demands is nowhere more evident than when it involves alcohol..... Council responsibilities include planning, community amenity, noise, density and the “right” mix of businesses.”

We would all agree with that; but Governments have to give Councils the power to balance these factors. In our City, Council often seems restricted by Government edicts such as the “Capital City Zone” – which sometimes seems to mean, “OK, do what you like as long as you call it development”.

(See the website – www.vscn.org.au)

Parterre anyone?

We must admit we didn't know this word – in spite of being involved in the Council's “Carlton Gardens Master Plan” and agitating to have the Flower and Garden Show more appropriately placed.

The first entry in our French dictionary says it means “theatre stalls”! But reading on we see it can also mean “flower beds”

If you haven't been to the Carlton Gardens lately – go!

A series of parterre beds are being laid out across the front of the Royal Exhibition Building. Currently, archaeologists are digging and exploring there.

But some excellent and well-illustrated signs of the original beds show how they looked, and will look. These photographs of the REB in the 1880's show how the beds were designed in a variety of shapes – they look terrific. *

You can help keep the Gardens Master Plan at the top of our agenda by getting in touch with the new “Friends of Carlton Gardens” – a group formed to encourage and assist implementation of the Master Plan (contact Denise at siteone@netspace.net.au for details)

(* The parterre beds again confirm that the South Gardens were NEVER used for exhibits, as claimed by the Garden Show people and some members of Council).



KEY PHONE NUMBERS

Emergency 000
(police, ambulance, fire)

Crime Stoppers 1800 333 000
(information about criminal activity)

Your State Member
(The Hon Bronwyn Pike MP) 9328 4637

Your Federal Member
(Lindsay Tanner MP) 9347 5000

City Council HOTLINE 9658 9658
(for any questions, complaints, guidance)

POLICE – Inspector Chris Duthie
and new Precinct Officers 9650 7077

POLICE REPORT — from Inspector Chris Duthie

On both the 25 and 26 May from 8:00 pm to 6:00 am I worked the streets with my staff as a part of a new operation called “Gasket” that Victoria Police has been trialling in answer to the escalating public order issues in the CBD (and in outlying entertainment districts such as Docklands, Fitzroy Street and Chapel Street). Thirty highly mobile police move en masse from area to area to proactively and reactively reduce the incidence of alcohol fuelled anarchy. During this operation I was disturbed with the violence and behaviour of patrons from some of the licensed “barns” in the CBD early in the morning.

This operation will continue over the next few months but unfortunately not every weekend due to resourcing issues. However Police will continue the normal foot patrols on Friday and Saturday night in an endeavour to maintain public order in the City.

In addition to the enforcement of public order I have been meeting with the Planning Department of the City of Melbourne since arriving in my position. At the last meeting it was decided that all planning applications for licensed premises, as well as liquor licensing applications, would be reviewed together by Council, Police and CAV Liquor Licensing. I will be doing my utmost to prevent the further proliferation of large nightclub venues being licensed in the CBD area as it is my belief that, with respect to nightclubs, Melbourne has reached saturation point.

Victoria Police will “Uphold the Right”

(continued from cover story)

What we think

What Vicki Davidson has said (page1) about the management of our parks and gardens should strike a chord with all of us – whether we are workers coming to the City every day; or visitors on a shopping or entertainment trip; tourists taking thousands of photographs; students from overseas or around Australia; or residents.

Our parks and gardens are our lungs. We can jog, walk or just sit and stare – the gardens are green, fresh and reviving. See how many people use them every day.

Indeed, with other community groups we have been working with the Parks and Recreation Branch of the City on an Open Space Strategy, to expand the areas available for our survival in the Big City. But sometimes other interests seem to want to enclose our spaces.

Some elements in the Council and their staff (and some business interests) seem to think only of our parks and gardens as sites for big “events”. As we have frequently said in this newsletter, we enjoy most events and have no problems with them. But there must be a proper recognition of the primary role of our open spaces.



Saving our trees and ankles

Congratulations to our Council for looking after our wonderful street trees. The bases around the trees have always been a problem, both in terms of tree health and pedestrian safety – especially for the disabled and the frail.

It is good to see that the use of small “pebbles” glued around the tree base is replacing the sandy areas which developed into “pedestrian traps” due to the wind and rain. This treatment creates a flat, secure surface which also allows water to drain into the root system. Originally only in a few places, more streets are now receiving the same benefits.

But.... it is a pity that not everyone appreciates our trees. There are sporadic outbreaks of “tree attack” – breaking off branches, snapping off stakes that support young trees, even pulling trees out by their roots. Why? A test of strength? A political or ideological protest? Even the “raingarden tree” in Davison Place (featured in our issue#32) has suffered a substantial branch torn off, despite its protective wall. These are probably the same loonies who have been drawing swastikas around town

Please, please report any such vandalism to the Police (without provoking these “urban terrorists”) and also the City Hotline (9658 9658) who will repair damage ASAP.

The Bridges of Melbourne

Melbourne City is responsible for 12 bridges – well identified and illustrated in a publication called “The Bridges of Melbourne City’ (a management plan for 2005-2010).

You can get a copy of this excellent publication free from the Front Desk at the Town Hall – then take a look at the real thing on your daily, healthy walk or run. They are pretty good!

Where, Why, When?



Here is a CBD building – where is it? When was it built? Why was it built?

A bottle of wine for the first all-correct answer from a CBD resident. Nobody knew details of the building in our last issue – it was a revamped 1960s ANZ bank building, now apartments on the corner of Elizabeth and Franklin Streets.

Human Droppings — Butts

Yes, they are everywhere – and we guess there will be more after 1 July when the law forbids almost all indoor smoking (except in your home or someone else's). And everyone knows that street butts play a huge part in the pollution of our waterways, including the Yarra.

It is illegal to drop a butt – BUT how many fines have been imposed in the CBD? And how many building owners and occupiers have installed adequate butt-out-bins for their employees?

Have a look outside any large building in the CBD – ugh! One of the most disgusting is the rear of a big, swanky hotel – backing onto George Place – where staff and local business folk leave enough butts to poison quite a big stretch of the Yarra!

The lack of action by employers, owners, occupiers and the City is a disgrace.

“National Action on Butt Litter Day” was on 27 March – did you notice? Neither did we.

The City said that wayward smokers would be blitzed and that Council Officers would issue fines of up to \$215. Of course with new laws banning smoking in bars etc starting on 1 July there will be more smokers on the street. If they drop a butt they should risk a fine of up to \$215 – but will they?

Indeed, did you know that a City Local Law requires that in the case of non-residential buildings, “Sufficient tobacco waste containers must be provided to contain all tobacco waste generated as a result of use or operation of the premises”?

If we may quote one of Melbourne's most famous smokers – “pig's ass”.

What you can do:

- speak politely to butt-droppers;
- report premises that do not provide butt out facilities to the Council (at 9658 9658 or enquiries@melbourne.vic.gov.au);
- encourage your workplace to supply bins or personal pocket/handbag ashtrays;
- remind your workplace to clean bins.

And please also let the Council know when their street bins overflow with butts – you may save the Fire Brigade being called out at a cost to the whole community.

(Useful links – www.cleanup.com.au; www.epa.vic.gov.au/litter; or for butt out bins sales/service try sales@buttoutaustralia.com.au)



Bubble, bubble, toil and trouble in the City

The Ernst and Young report on the Council's administration has been hastily taken up by the CEO and some Councillors. Redundancy is never a happy step, but it is usually due to loose administration, bad management and ineffective policies. But as in this case, it is also usually the innocent (ie those who did not cause the problems) who cop it. No wonder we see meetings of Australian Services Union members in the Town Hall.

Our residents throughout Melbourne find that most of the Council staff are easy to approach and helpful. But often, because it is a complex organisation, it is difficult to find one's way around, especially if you have a complex community issue, good or bad.

One of the best initiatives of this Council has been the appointment of Place Managers, especially bearing in mind the vacuum left by the absence of Ward Councillors.

For example if you have an idea that you would like to discuss with Council or have an ongoing neighbourhood issue that you think is Council – related, your local Place Manager is a great place to start.

Place Managers can provide support help us to create and maintain strong local networks. Certainly we have found our relationships with relevant Place Managers to be extremely productive.



GREGORY'S SHOE REPAIRS 242 Exhibition Street, Melbourne

T: 9639 2589

- shoe repairs •
- keys cut • dry cleaning •
- garment alterations •

TRITIN PROPERTY SERVICES
SPECIALISTS IN HIGH-RISE BODY CORPORATE
& FACILITIES MANAGEMENT

YOUR ASSET, OUR SOLUTION!

P: (03) 9600 1082
E: info@tritin.com.au

TRITIN
PROPERTY SERVICES

pollon

FLOWERS BY NICOLAS MINTON-CONNELL
199 FLINDERS LANE
T: 9663 8232 F: 9663 8233
pollonflowers@hotmail.com



MELBOURNE CITY
DRY CLEANERS

DRY CLEANING
COIN LAUNDRY
VIP CARD discount

244 Russell Street, Melbourne
Monday to Friday 7:00 am – 8:30 pm
Saturday + Sunday 9:00 am – 8:30 pm

T: 9639 3377



ANNIE & ALEX JESAULENKO
T: 9642 5226 F: 9642 5227
E: thequeenofthefruits@yahoo.com.au
W: www.thequeenofthefruits.gomangosteen.net

Madam Brussels again!

If you missed the two naughty lady pickpockets at our Madam Brussels show last month, here are some pictures to stimulate your interest in catching them "on tour".

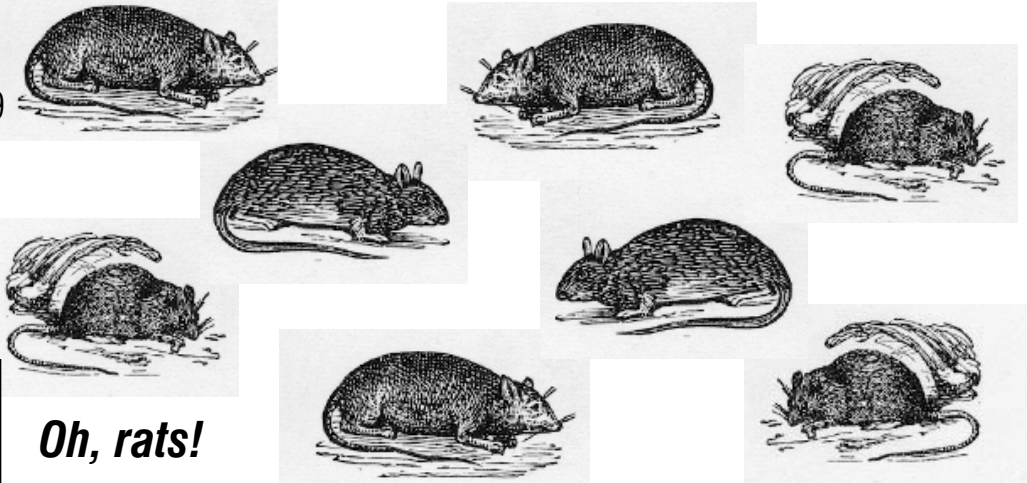


We are grateful to the City Council for allowing us the use of the Council Chamber for this event



Vice & Virtue in Little Lon.

FIVE performance / tours only:
 Sundays — June 17 and 24,
 at 3:00 pm July 1, 22 and 29
 Bookings: **Melbourne Museum**
 1300 130 152
 \$30 full / \$25 concession
 Enquiries: 9380 9646



Oh, rats!

Rats caused the Plague of London in 1665, which killed around 100,000 people in the crowded, poorer parts of the city. It was only halted by another great disaster – the Great Fire of London. The fire destroyed about 200 hectares of buildings (it was reported that molten lead ran down some streets) – 9 people died due to fire – but it cleansed the city of rats and plague germs.

food shops. We have alerted the City health authorities and they are undertaking a search and destroy mission.

But those authorities must also remember the plea in our last issue for a clean City.

We will keep you informed, but PLEASE report rats or other vermin you see around the City – ring the Hotline on 9658 9658 or e-mail us. And report dirty areas, spilling bins, – of which we have far too many, even in places like the City Square.

Members have recently reported numbers of rats in some of our alleys and lanes – some of which house garbage bins used by fast

Gadhra & Milesian Hair

9654 9889
 Level 1, 270 Russell Street, Melbourne VIC 3000
www.gadhra&milesian.com.au

- Luxury New York loft inspired salon •
- personalised + innovative cutting •
- specialists in individual colouring •
- Kérastase exclusive, rituals + baths •
- Flexible Salon hours to suit your lifestyle •

T: 9654 9889

Street Art Vs Graffiti

Although most people dislike “tagging”, many appreciate the more creative, artistic pieces that adorn many of Melbourne’s laneways and alleys. So the Council now allows property owners/occupiers to apply for a Street Art Permit. There is no fee to apply for a permit – which may also include existing artwork.

A Street Art Assessment Panel reviews applications against selection criteria. The Panel does not consider the artistic merit of the project, but is concerned only with the impact on the local area and the appropriateness of the site. The Panel comprises three Council officers and two external representatives.

The Panel met for the first time last month and considered two applications. One is for an aerosol style mural in an inner city laneway – one that is already recognized for its existing graffiti and unauthorised artwork. The other application was for a railway underpass – one used for unauthorized artwork for many years. In this case it is hoped that a series of planned aerosol art murals will deter taggers and increase pedestrian and cycle traffic, thus improving natural surveillance of the space. Both were approved by the panel.

Early indications are that residents, businesses and community groups are embracing the concept. We see this as a genuine attempt to manage the process, without stifling the creativity of the incredibly talented artists who have done so much to create the unique, colourful and surprising images that adorn our built environment.

For those wanting to apply for a permit, the process is simple:

- Fill in an application form, with a description of the proposed artwork, location, and relevant building owner/occupier permissions. Special conditions apply if there are heritage controls on the building.
- A prominent sign (provided by the Council) is placed at the location for 14 days, inviting comments to Council.
- The panel will consider your proposal, and any comments received.
- If the permit is issued, it will be valid for 3 years and may contain conditions that must be met.

For more information about the street art permit process, contact the City’s Engineering Services Group on 9658 9658.



To have offending graffiti removed: if you see someone placing graffiti on property you should call the Victoria Police on 000 (graffiti on private property without permission is a criminal offence).

If you see graffiti on property or infrastructure in your local area (eg. post boxes, signal boxes), call the City of Melbourne on 9658 9658 – Council will arrange for its removal.

All obscene, racist or offensive graffiti is removed as a priority.



It’s Time — lets GO Steve!!!

All local government elections in Victoria will in future be held on the last Saturday in November, every 4 years – next on 29 November 2008. But Melbourne is different in other respects – and not for the better.

All the residents associations in Melbourne have been urging the State Government to update the electoral system for our City. What do we want?

- 1 A return to electoral Wards – that is, Councillors are elected on a district basis; such as CBD, Carlton, East Melbourne and so on. At present Councillors are elected without any specific constituency; so if you want to talk to your Councillor, or see how she or he is performing on your behalf – you can’t! Of course you DO have a local member of Parliament at State and Federal level, but you are not directly represented on Council in this way. It is very simple for the Government to restore Wards – every other local government council is elected in this way. *

*(Knowing the frustration of Melbourne citizens, one City Councillor recently proposed that each Councillor be allocated to a locality to make things easier. Reluctantly Council has now asked the Finance and Governance Committee to examine the proposition more closely. We strongly support the proposition and will be lobbying for it.)

- 2 And we have joined with all other residents groups also to demand restoration of attendance voting instead of postal voting at the election. This is a more democratic system – it is used in State and Federal elections after all. We believe better representation will flow from this form of voting. Our City must fully embrace democracy!
- 3 We support the direct election of the Lord Mayor, but on a separate ballot paper from Councillors. As a result of the current system, we have two factions which simply seem to vote in opposite directions on

almost every issue. This is NOT good for Melbourne.

- 4 Currently residents are underrepresented. Residents have 1 vote each, but commercial property owners get 2 votes each. As many property and business owners reside overseas and rarely if ever come to Melbourne, representation is distorted.
- 5 If the owner of a non-residential property is not on the list, the City has to go to the Australian Securities Commission register and automatically enrol the company secretary and one director to receive one voting paper each. That is, the City simply looks up ownership and posts off ballot papers! Those who receive them (several thousand) may be anywhere on the planet and may never have been to Melbourne nor even Australia! Talk about a “donkey vote”!

We don’t need Ernst and Young on this one – LETS GO STEVE!

Living together

On the right of this page are details of our three residents associations in the CBD. Do we need three? No, of course not. But like many community organisations we grew in a higgledy-piggledy fashion to meet specific issues at different times over the last 15 years.

But these are new times – so we are getting together in unity!

We are getting close to the time of Annual General Meetings. At these meetings we will be putting a plan to all members for joining together into one organisation – Residents 3000 Inc. We chose this name because it simply and accurately says who we are – it is not a “takeover”!

So, please get ready. As soon as possible we will be advertising the AGM details – hopefully on the same day, in the same place – and away we go!

In the meantime please be thinking about what it means to you to be a resident in Melbourne CBD and how we can best work together.

Here are some ideas – but we want yours too:

- we need a good knowledge of the various areas of the CBD. So we need a few people in, say, each quarter of the City who can be “correspondents” to keep us in touch with local matters;
- we need an active Committee; it can help if we can get a group in which each member has an interest in each area of Council activity – eg planning, community services, the environment, parks and gardens, our infrastructure, and more. This will make the “work “ more interesting and give us better understanding of what is happening.
- we would like a few people who could look after a small program of general meetings. Where? Well JWOW was a good location for some events. Can we think of others too?

So, we ask you to think about our future – how can we make City living even better? How can we best liaise with the Council and its staff – and with other relevant authorities (VicRoads, the Police, the State Government generally)?

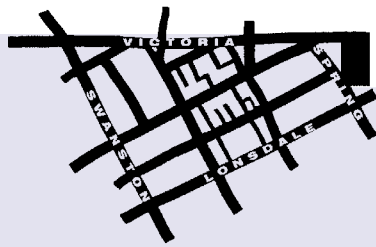
Please let us hear from you. For contact

LONSDALE rentals + sales

John P O'Brien
LIC. REAL ESTATE AGENT

T: 9662 1022

suite 2C, 131 Lonsdale Street



EAST ENDERS INC

PO BOX 225 CARLTON SOUTH 3053 VICTORIA
info@eastenders.com.au

ABN 11910607307

EastEnders is the residents association for the neighbourhood bounded by Spring, Victoria, Swanston and Lonsdale Streets

The Committee is:

Michael Kennedy — *President*
Karin Dixon — *Vice President*
Vacant — *Secretary*
Prudence Willsford — *Treasurer*
Vacant — *Member*

For information and membership write to us or see
www.eastenders.com.au

Our formal purposes are:

1. To be concerned with the advancement of the wellbeing, amenity and environment of residents;
2. to consult with and advise the City of Melbourne and other authorities, businesses and persons in relation to 1. above;
3. to promote and encourage good relations between all residents, businesses and occupiers within the area; and
4. to undertake such activities as considered appropriate by the Committee of Management, or the association in a properly convened Annual or Special General Meeting to achieve the above purposes.



Residents 3000 is a community association to promote the wellbeing, amenity and environment of CBD residents. We consult with the City Council, other levels of government and with local businesses.

For information and membership write to us or see www.residents3000.net.au

PO Box 197
Flinders Lane Post Office
Melbourne 8009
www.residents3000.net.au

Peter Matthews — *President*
Lynden Kenyon — *Vice President*
Anne Emery — *Secretary*
Sean Kenyon — *Treasurer*
Wolfgang Jacobs — *WebMaster*



OUR NEIGHBOURHOOD
Editor: Peter Matthews
supported by a Community
Information Support Scheme Grant



HARDWARE PRECINCT RESIDENTS AND TENANTS ASSOCIATION

If you would like to participate please email on:
hardwareresten@yahoo.com.au
We look forward to hearing from you

Hardware Precinct Residents and Tenants Association

This Association covers the area bounded by Queen, Elizabeth, Bourke and La Trobe Streets. At the heart of our area is the vibrancy of Hardware Street, its surrounding areas, and all the fabulous little lanes crossing Little Bourke, Bourke, Little Lonsdale and La Trobe. We like to think that our area has a unique feel, a village feel, with cafes and retail shops, but also necessary retailers for residents such as shoe repairers, hairdressers, chemists, dry cleaners and all the businesses and services that you need in your daily life.

JOIN A RESIDENTS GROUP NOW!!!

Talk to a Committee member – see above for contact details

cityFolk #6

Paul and Alice Sidhu left a “leafy suburb” for our CBD about 18 months or so ago. They now live in a pleasant building with about 30 apartments in a very busy area.

Not only did they jump from a detached house and garden to an apartment in our City, but Paul soon found himself on the Body Corporate Committee, and more recently became Chairperson.

We all know how important the body corporate is – whether you are an owner/occupier, a landlord/lady or a leaseholder/tenant. They make the rules and, hopefully, they look after the maintenance, cleaning, garbage disposal, and all those important things.

The BC usually appoints Body Corporate Managers, in most cases “professional” companies (the quotation marks indicate that they do not currently require formal qualifications – a situation we hope will shortly be resolved by new regulations). Paul says that they have been through a few – and have one now. But as he has now built up a good Committee, they do most of the standard things themselves. That’s something many bodies corporate would like to be able to say.



But, as in many other apartment buildings he feels that is a general lack of community amongst the BC members and occupiers. This is a common in apartment dwellings, so we remind Paul and everyone else of the Council’s internet newsletter – Vertical Living (on www.melbourne.vic.gov.au and go to Vertical Living – if you register each issue will be sent to you automatically)

And, like many others, Paul and his Committee are still trying to get a clear idea of the changes



coming in the new Owners Corporation Bill, presently out for public comment (see our last issue and www.consumer.vic.gov.au). Any other worries?

Yes! The growth of large, late night “clubs”/bars. For Paul’s Committee this concern is close to home with plenty of “doof, doof”, street smoking/drinking and the threat of a “kerbside café” – with a liquor license, of course. Sounds familiar to many of us lately.

But like all City dwellers, Paul and Alice love the life. They say they moved into the City because they found that they spent a lot of time and money travelling to and fro, for both work and pleasure. Now they walk everywhere – they like the streets and the atmosphere of the real Melbourne.

Lighting up Chinatown

Council officers recently met with Chinatown Precinct leaders and our residents groups to discuss improvements, planned and potential.

Council presented three planned improvements:

Tianjin Gardens

(at the Spring Street junction)

To commemorate the 25 anniversary of our sister City relationship, the City of Tianjin has presented to Melbourne two large lion sculptures in brass and also a large important and significant rock for the Gardens. Also planned is the planting of deciduous trees such as prunus trees – bearing red foliage with white blossom in spring.

Chinatown entry poles

(at the Spring Street entry)

The entry to Little Bourke Street is too narrow for an archway. So two poles will be erected, lit in the same way as in Bourke Street for the Commonwealth Games.



Chinatown arches

(down Little Bourke Street)

The existing arches to be refurbished. It has been revealed that the existing style of arch is associated with cemetery arches! So they are being reinterpreted, redesigned and painted in a welcoming colour.

Street Lighting

In addition the street lighting is being renewed, in a way similar to Cohen Place. The lights will provide better illumination and cost less in electricity.

Signage in Chinatown is also being reviewed – something that will help everyone.

The **Chinatown Precinct Association** also presented some interesting and exciting draft plans for discussion; for example:

- provision for outdoor dining;
- coloured paving to enliven the streetscape;
- a wider footpath on the South side (which is the sunny side); and
- some sculpture, artworks and water features in selected locations.

And next – we look forward to the plans for the Greek Precinct (in Lonsdale Street) and for Lygon Street in Carlton. In addition to our Council’s commitment to these projects, the State Government has made \$8 million available for projects for these three Cultural Precincts.

